

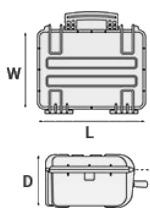
## Mod. 4419 B

### COPOLYMER POLYPROPYLENE WATERPROOF CASE

Waterproof cases providing a solution for any equipment requiring a high level protection. Exclusive PP based injection molded body grants superior resistance.

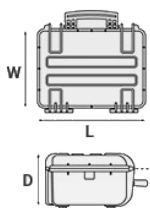


METRIC MM-KG-C°



INTERNAL DIMENSIONS		EXTERNAL DIMENSIONS		OTHER DATA	
L LENGTH	445 mm	L LENGTH	474 mm	WEIGHT EMPTY	4 Kg
W WIDTH	345 mm	W WIDTH	415 mm	WEIGHT WITH FOAM	4.70 Kg
D DEPTH	190 mm	D DEPTH	214 mm	WEIGHT WITH CUSTOM FOAM	Kg
LID	47 mm			VOLUME	29.20 lt
BASE	143 mm			BUOYANCY	29.20 Kg/max
				OPERATING TEMPERATURE	°C min -33 / max +90

IMPERIAL IN-LBS-F°



INTERNAL DIMENSIONS		EXTERNAL DIMENSIONS		OTHER DATA	
L LENGTH	17 1/2 in	L LENGTH	18 11/16 in	WEIGHT EMPTY	8.81 lbs
W WIDTH	13 9/16 in	W WIDTH	16 5/16 in	WEIGHT WITH FOAM	10.36 lbs
D DEPTH	7 1/2 in	D DEPTH	8 7/16 in	WEIGHT WITH CUSTOM FOAM	0 lbs
LID	1 7/8 in			VOLUME	7.66 gal
BASE	5 5/8 in			BUOYANCY	7.66 lbs/max
				OPERATING TEMPERATURE	°F min -27.4 / max +194

## FEATURES



### CORROSION PROOF METAL HINGES WITH LID STAY FEATURES



### LID CAN BE SET TO SLIDE-OFF

By releasing the back screw, lid becomes set to slide-off when opened at 70°



### SEALING O-RING

(Art. NEOSEAL + nr. art.)



### OPTIONAL SHOULDER STRAP (universal)

(art. SHOULDERKIT.U)



### SOFT GRIP RUBBER HANDLE

Asa de carga comprobada, reforzada con pasadores de acero a prueba de corrosión



### FIXING POINTS

Additional fixing points on the lid, available on certain models



### JAM FREE LATCHES WITH EASY-OPENING MECHANISM

(from model 3818 on)



### INTERNAL SLOTS

Internal slots for optional panel mounting brackets or panel mounting rings



### PVC WATERPROOF I. D. REMOVABLE LABEL

(Art. LABELCOVER + nr. art.)



### MANUAL PRESSURE RELEASE VALVE

The internal stop ring prevents valve from being completely extracted (Art. PURGEVALVE.B)

## ACCESSORIES



### PROTECTIVE SLEEVE FOR PC 13'-13.3'''

TOP ENVELOPE 13

Protective padded notebook sleeve. Protects the laptop from shocks and scratches.



### TOP COVER FOR DIV4412 AND DIV4419

COV44

Top covers available for larger models: they can be easily fixed on the dividers by Velcro strips. Ideal to protect and keep items in place.



### PADDED DIVIDER FOR 4419

DIV4419

Padded dividers with internal adjustable partitions. Ideal to protect and transport any kind of sensitive equipment. Thanks to their modularity, they can be easily combined.



### PADDED BAG WITH ADJUSTABLE DIVIDERS

BAG-A

Highly durable padded bag with rubber coated handle and robust zipper with lockable Velcro pull zipper. Practical external front pouch for documents, removable shoulder strap and rubber feet on the bottom to grant better grip.

Internal adjustable padded dividers for flexible configuration.

Ideal to protect sensitive equipment (ie electronic, photographic, broadcasting, medical etc.).

Suitable for case 4419.

Color: black.



### LID PANEL WITH ORGANIZED POUCHES

PANEXPL44

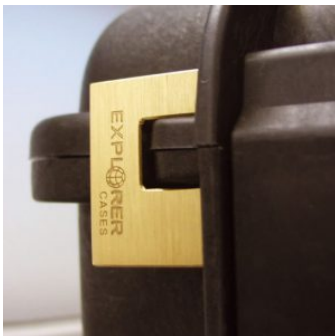
Practical and robust lid panel with pouches, ideal for small accessories and documents. Suitable for cases 4412 and 4419. Color: black.



### ADJUSTABLE SHOULDER KIT

SHOULDERKIT.U

The kit is composed by: shoulder strap with plastic endings, 4 threaded knots, 2 metal plates. (min. extension 106 cm, max. extension 201 cm). The strap comes with the Explorer logo. Suitable for models: 1908, 1913, 2209, 2214, 3005, 4412, 4419, 5117, 9413, 11413 and 13513.



### PATENTED HEAVY DUTY BRASS PADLOCK WITH KEYS

EXPL PADLOCK

Designed to fit snug to the Explorer case mould so as not to swing out



### PATENTED COMBINATION PADLOCK

EXPL COMBILOCK

Designed to fit snug to the Explorer case mould so as not to swing out



## HANDY BACKPACK CARRYING SYSTEM FOR CASES

BACKPACK L

Made of robust tear resistant polyester. Designed with adjustable and comfortable padded shoulder straps and belt.

Provided with an external pocket for small accessories, with Velcro strap.

Ideal wherever a free hand movement is required, like in outdoor activities, extreme sports, emergency, rescue, trekking, industrial field, etc.

Suitable for models 3317W, 4412, 4419 and 4820.

Color: black.



## BLIND INSERT

KIT.EXPL.PLUGS

Kit includes 6 pcs.

Whenever the slots are not going to be used for in-built applications, those can be closed by blind inserts that will give the case a better and finished interior look.



## TSA APPROVED PADLOCK WITH COMBINATION

EXPL TSA.DIGILOCK

The new TSA approved padlocks allow tsa® airport security agents to open the case without destroying the lock. TSA agents are trained to recognize the travel sentry certified logo and should not break the case lock.



## METAL BRACKET

KIT SUPP.EXPL.

Kit includes 6 pcs.

All models (except for the 1908) are internally equipped with specific slots, to apply the optional metal or plastic brackets which provide either a panel's fixing points or a fix mechanical joint inside the case, to build more complete applications. This way the case becomes a real workstation, rather than just a carrying container. As the panel mounting brackets are mechanically fixed by screws, they can be removed when necessary. The dedicated screws allow the case to remain waterproof, and help the panels to be removed easily and quickly



### PLASTIC BRACKET

KIT SUPP.PLAST.

Kit includes 6 pcs.

All models (except for the 1908) are internally equipped with specific slots, to apply the optional metal or plastic brackets which provide either a panel's fixing points or a fix mechanical joint inside the case, to build more complete applications. This way the case becomes a real workstation, rather than just a carrying container. As the panel mounting brackets are mechanically fixed by screws, they can be removed when necessary. The dedicated screws allow the case to remain waterproof, and help the panels to be removed easily and quickly



### PANEL RING FOR CASE 4412 AND 4419

PANRING44

Includes Metric system fixing screws.

User friendly panel frames, they can be used to fix several kind of panels, from plastic to aluminum ones. Equipped with an additional gasket (which will be squeezed in between the panel and the frame) they can provide the case with a perfect instrumentation surface and a further humidity and dust resistance when the case is used in the field.

Completely removable, resistant and light, these panel rings help to transform the Explorer cases into practical workstations.



### CONVOLUTED FOAM SET FOR CASE 4412 AND 4419

LIDFOAM.44

(includes 2 pcs.)



### FOAM SET FOR CASE 4419

FOAM.4419

Layers of pre cubed foam for the bottom and convoluted foam for the lid





## PANEL RING FOR CASE 4412 AND 4419

PANRING44.USA

Includes Imperial system fixing screws.

User friendly panel frames, they can be used to fix several kind of panels, from plastic to aluminum ones. Equipped with an additional gasket (which will be squeezed in between the panel and the frame) they can provide the case with a perfect instrumentation surface and a further humidity and dust resistance when the case is used in the field.

Completely removable, resistant and light, these panel rings help to transform the Explorer cases into practical workstations.

## SPARE PARTS



### Rubber coated handle for models 3818-4412-4419-5117-5122

KIN.0479

Includes:

- 1 black handle
- 2 fixing pins



### Name tag holder for models from 2712 up

KIN.0496

Includes:

- 1 transparent name tag holder



### EPDM extruded o-ring seal for models 4412 and 4419

KIN.0533

Includes:

- 1 o-ring



### Easy-opening latch for models from 3818 up

KIN.0446

Includes:

- 1 black latch
- 1 fixing pin



**Polyurethane o-ring seal for models 4412 and 4419**

KIN.0850

Includes:  
1 o-ring



**Manual pressure release valve for models from 2712 up**

KIN.0495

Includes:  
1 black purge valve (+ o-ring + pin)  
1 threaded bush  
1 snap ring (Seeger)